

When WWTPs Say “No!”

The Journey to Our Clean Water Farm

BBB



Cleanwater
Farm
Nutrient Recycling

The views in the presentation are the presentors, not NOWRA's.

The Problem

Septic and portable toilet businesses must find dump sites.

Municipal wastewater plants have restrictions and inconsistent fees.

Sudden capacity issues can halt operations entirely.



Why We Had to Change

Inconsistent dumping rules at municipal plants.

Capacity issues led to service disruption.

Forced to find a sustainable, reliable alternative.



Developing Our Own System

Five years of planning before implementation.

NIMBY resistance made local options impossible.

Land near town was unavailable or uncooperative.



Our New Plan

Set up remote depots near work areas.

Use an 80-acre farm for main processing.

Bulk trucks transport waste from depots to the farm.



CleanWater Farm Methods

A) Land application on 24 acres of hay fields.
Use of floater tires to reduce compaction.



CleanWater Farm Methods

B) Dewatering unit with polymer blending.



Effluent Processing

Water flows into 20,000-gallon tank after dewatering.
Pumped into lateral field with 3,600 ft of Infiltrator chambers.



System Capacity and Expansion

Process 4.5 million gallons/year.

Planning for more land application acreage.

Expanding tree irrigation and absorption lines.



Success and Community Impact

5+ years of operation with zero complaints.

Excellent soil test results.

Neighbors requesting to join the land application permit.

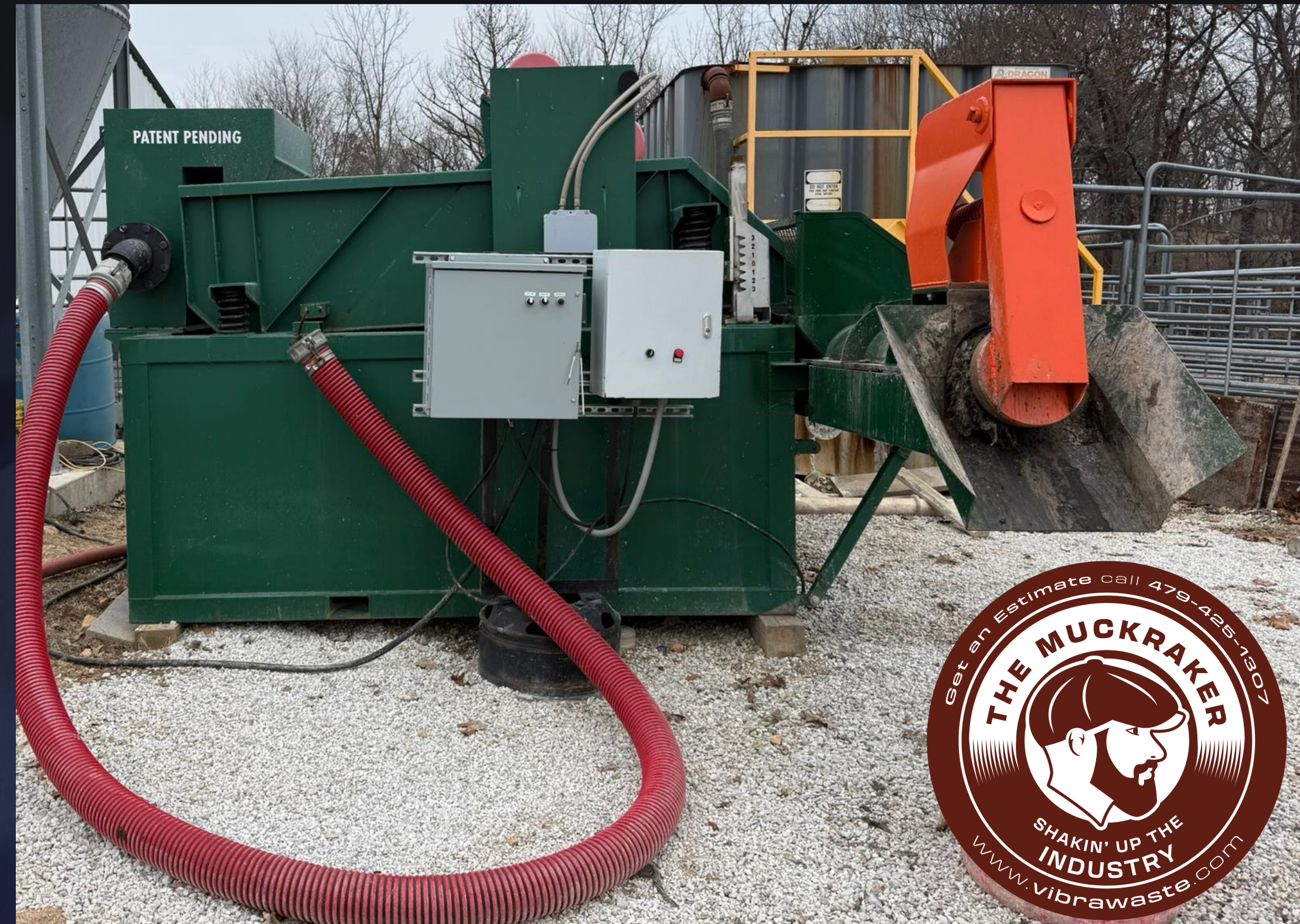
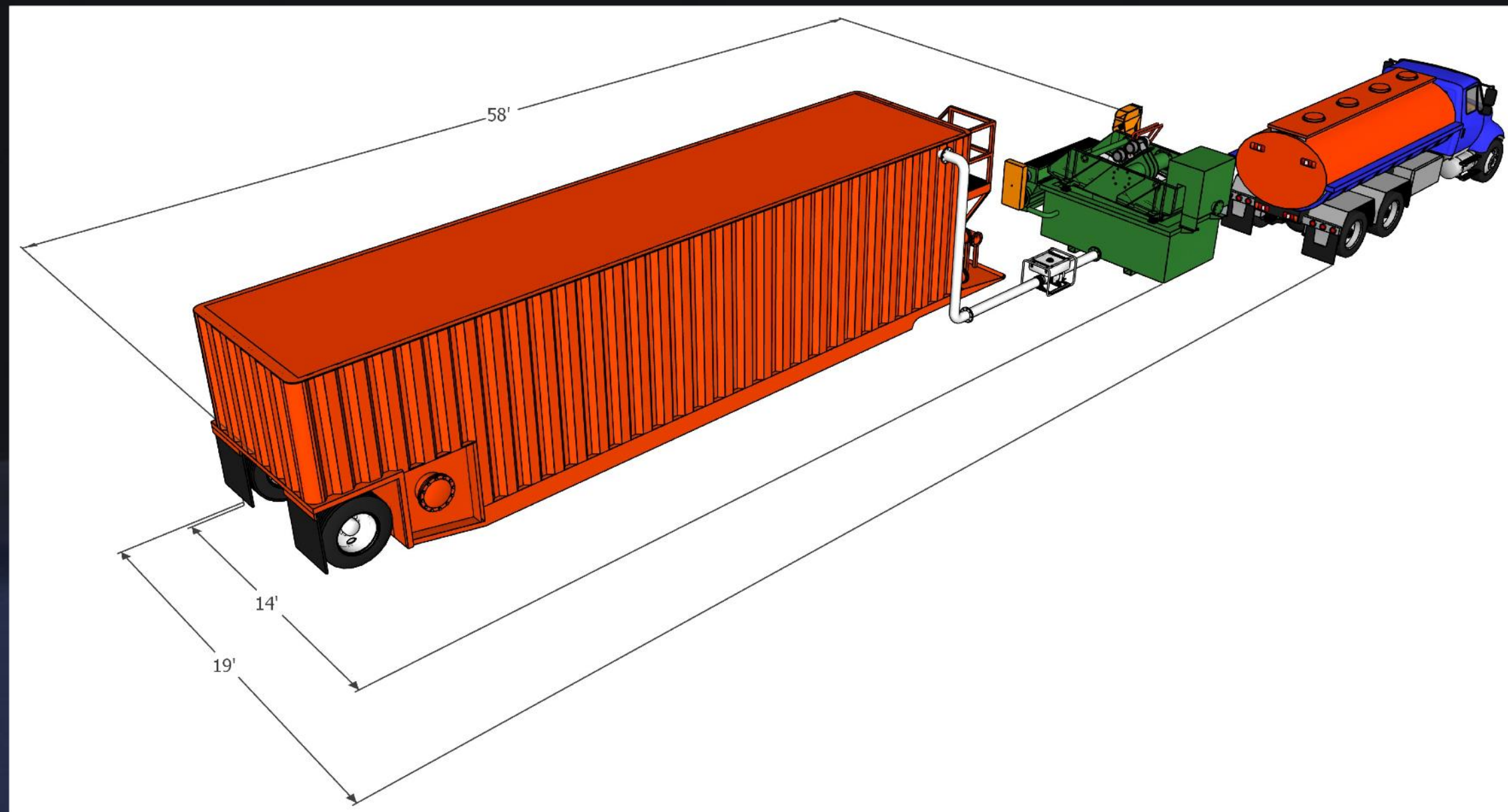


Depot Operations

Each depot uses a Muckraker screen to filter debris.

Grit filtered out, liquids stored in frac tanks.

Muckraker powered via 30amp RV plug.



Future Goals

Currently landfill solids from dewatering.

Working on solution for a green closed-loop system.



BBB



Cleanwater
Farm
Nutrient Recycling



VIBRAWASTE
VIBRAWASTE
VIBRAWASTE

