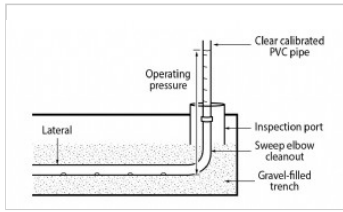


cleanout

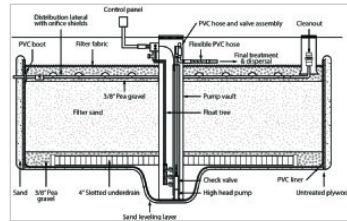
device designed to provide access for removal of deposited or accumulated materials, generally from a pipe.

cleanout images/graphics:



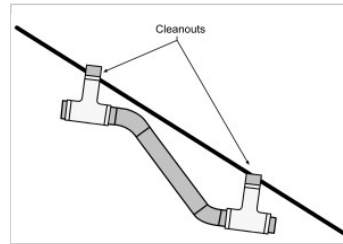
Measuring operating pressure

Measuring operating pressure in a LPD lateral

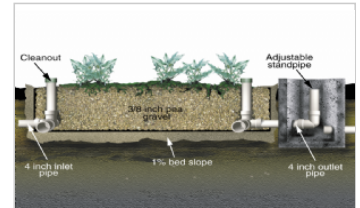


Buried single pass sand filter with pump vault

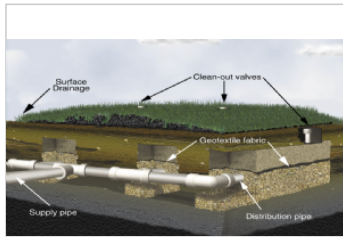
Construction detail for buried, single pass sand filter with a pump vault, profile view



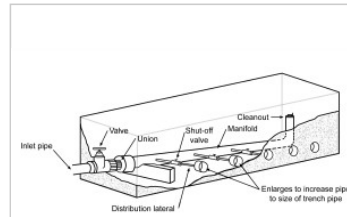
Slope break configuration for piping



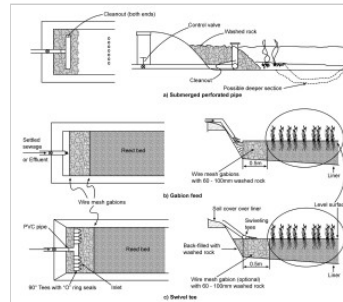
Constructed wetland treatment unit



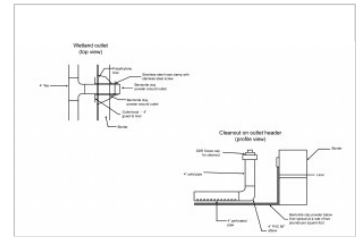
Low pressure distribution STA



Pressure manifold, shown housed in a vault



Example of constructed wetland inlet designs



Details of constructed wetland outlet device