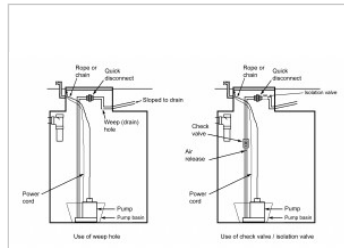
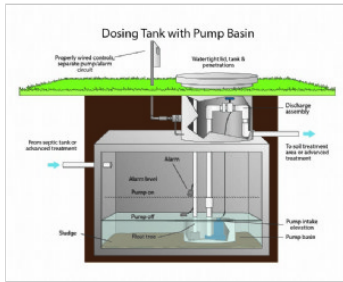


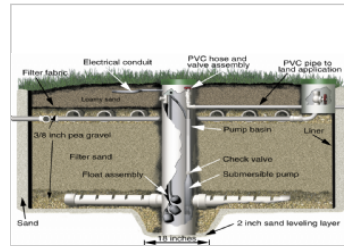
pump basin

Shallow open container installed in a dosing tank; the container houses the pump and effectively raises the pump intake level to the lip of the basin.

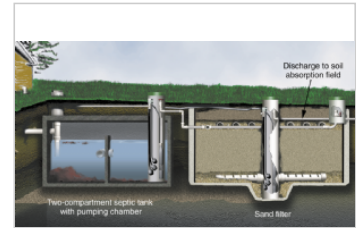
pump basin images/graphics:



Discharge assemblies showing device options



Buried sand filter unit



Septic tank and buried sand filter treatment unit

Dosing tank, pump basin, pump demand dosing

Dosing tank with the pump installed within a pump vault, demand dosed float configuration, profile view, color