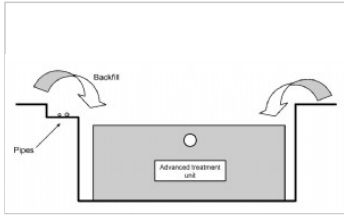


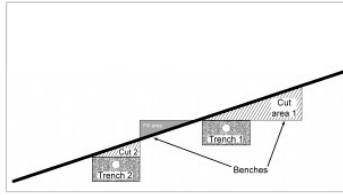
excavation

Any man-made cut, cavity, trench, or depression in an earth surface, formed by earth removal.

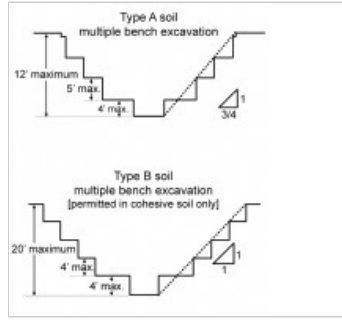
excavation images/graphics:



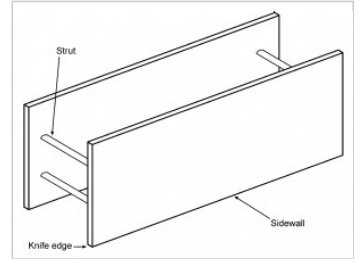
Benching for piping install along trench



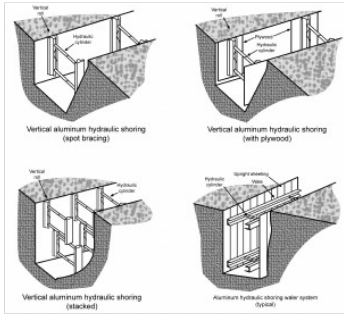
Benching for trench construction



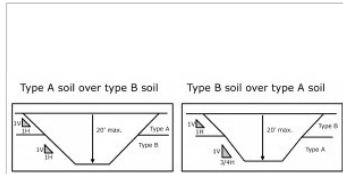
Benching in Type A and B soils



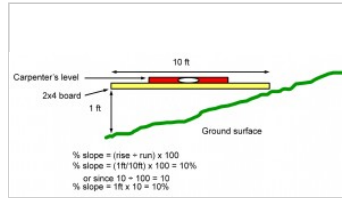
Shield system



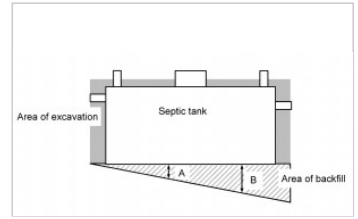
Shoring, aluminum hydraulic



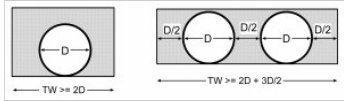
Maximum allowable slope on sites with layered soils



Slope measurement with 10-foot board and carpenter's level



Over-excavation and settling



Width of excavation in relation to pipe diameter