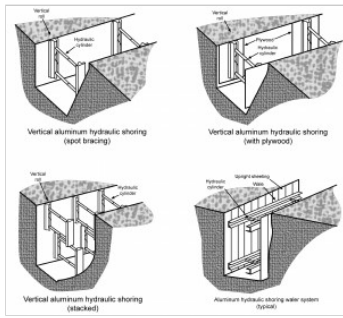


aluminum hydraulic shoring

Pre-engineered shoring system comprised of aluminum hydraulic cylinders (cross braces) used in conjunction with vertical rails (uprights) or horizontal rails (wales); designed specifically to support the sidewalls of an excavation and prevent cave-ins.

aluminum hydraulic shoring images/graphics:



Shoring, aluminum hydraulic